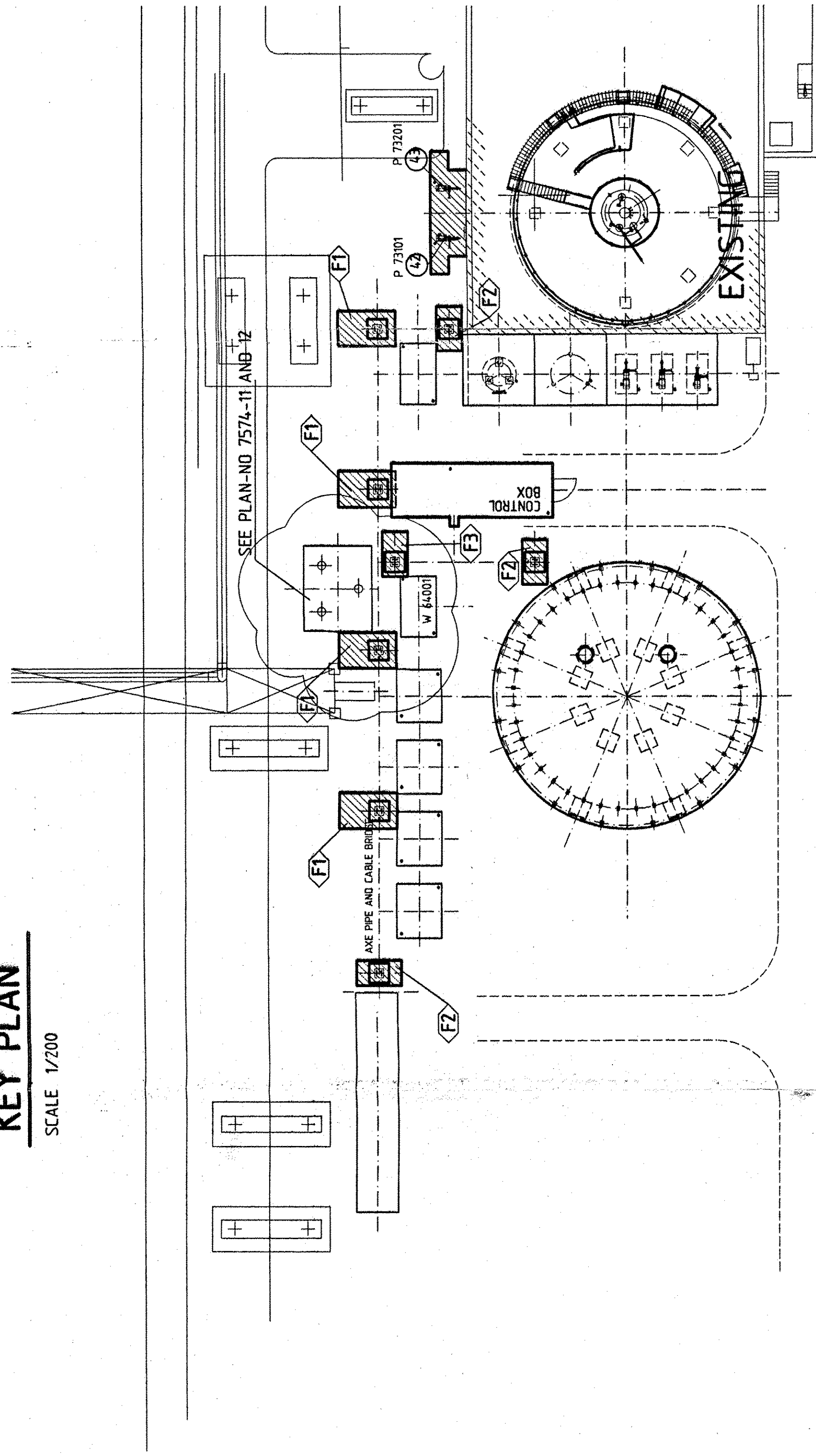
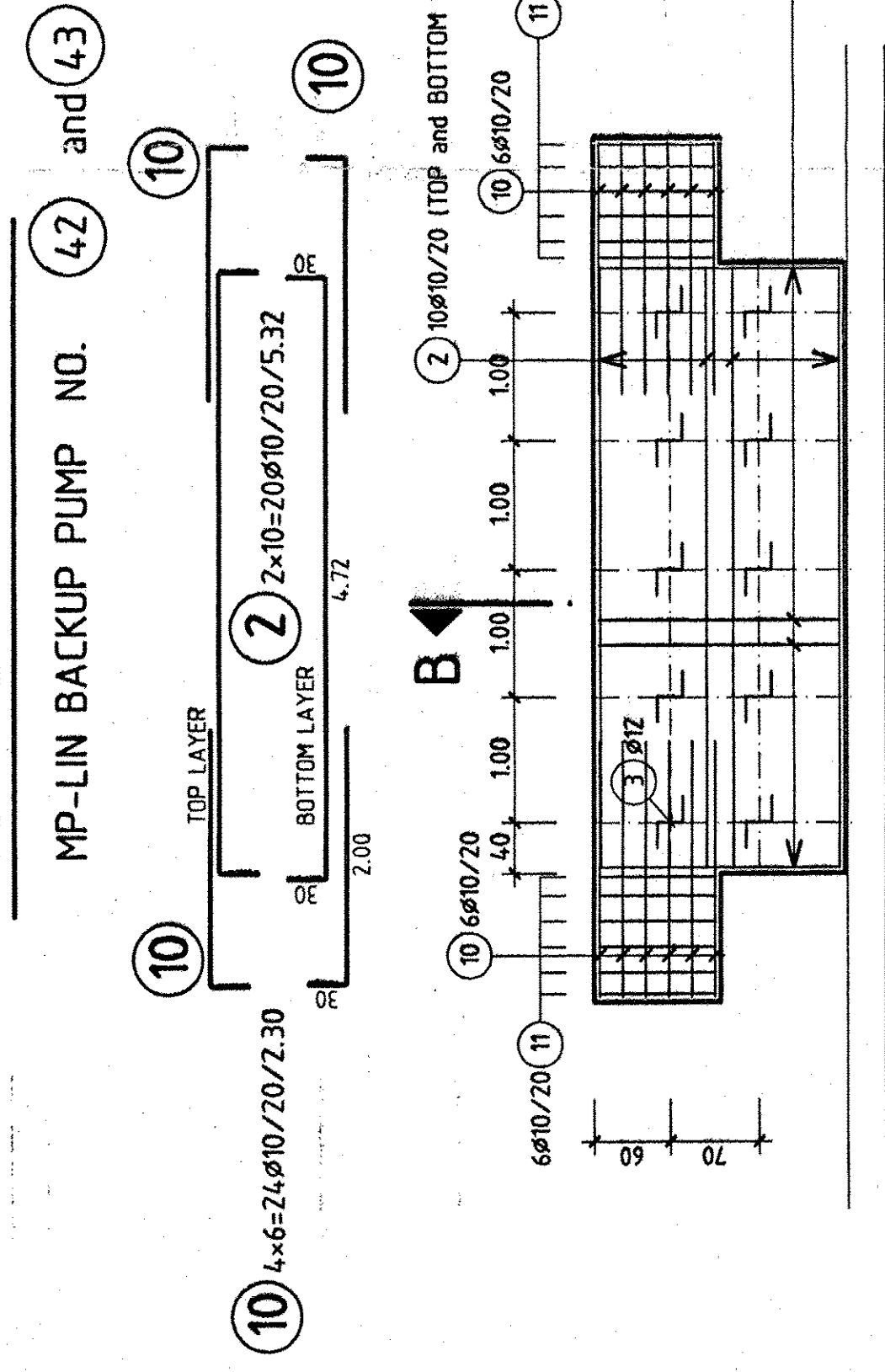


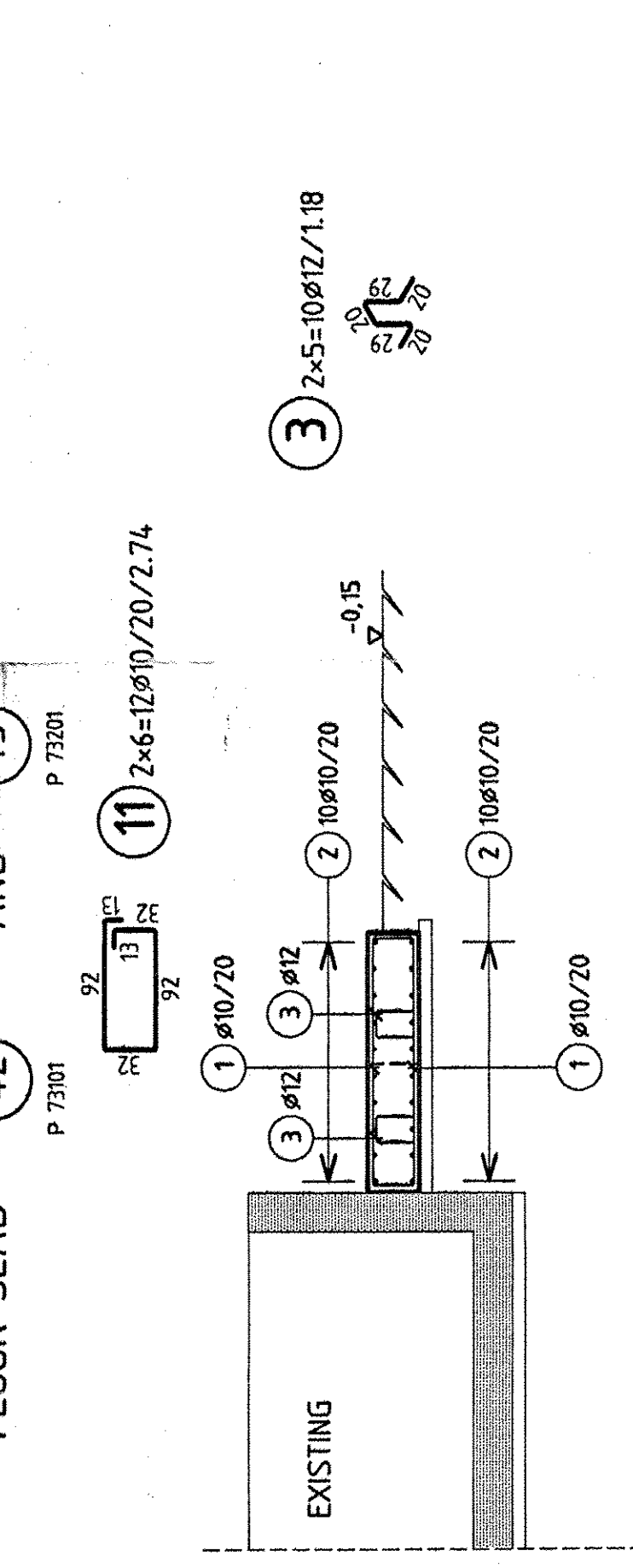
KEY PLAN
SCALE 1/200



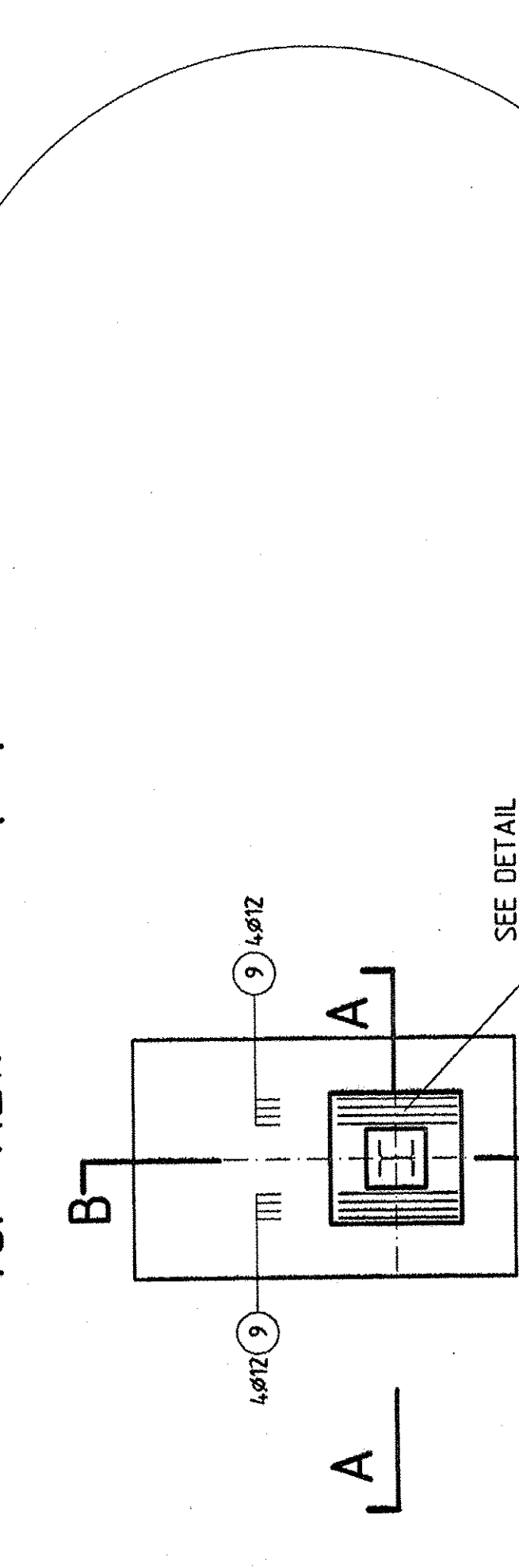
TOP VIEW FLOOR SLAB



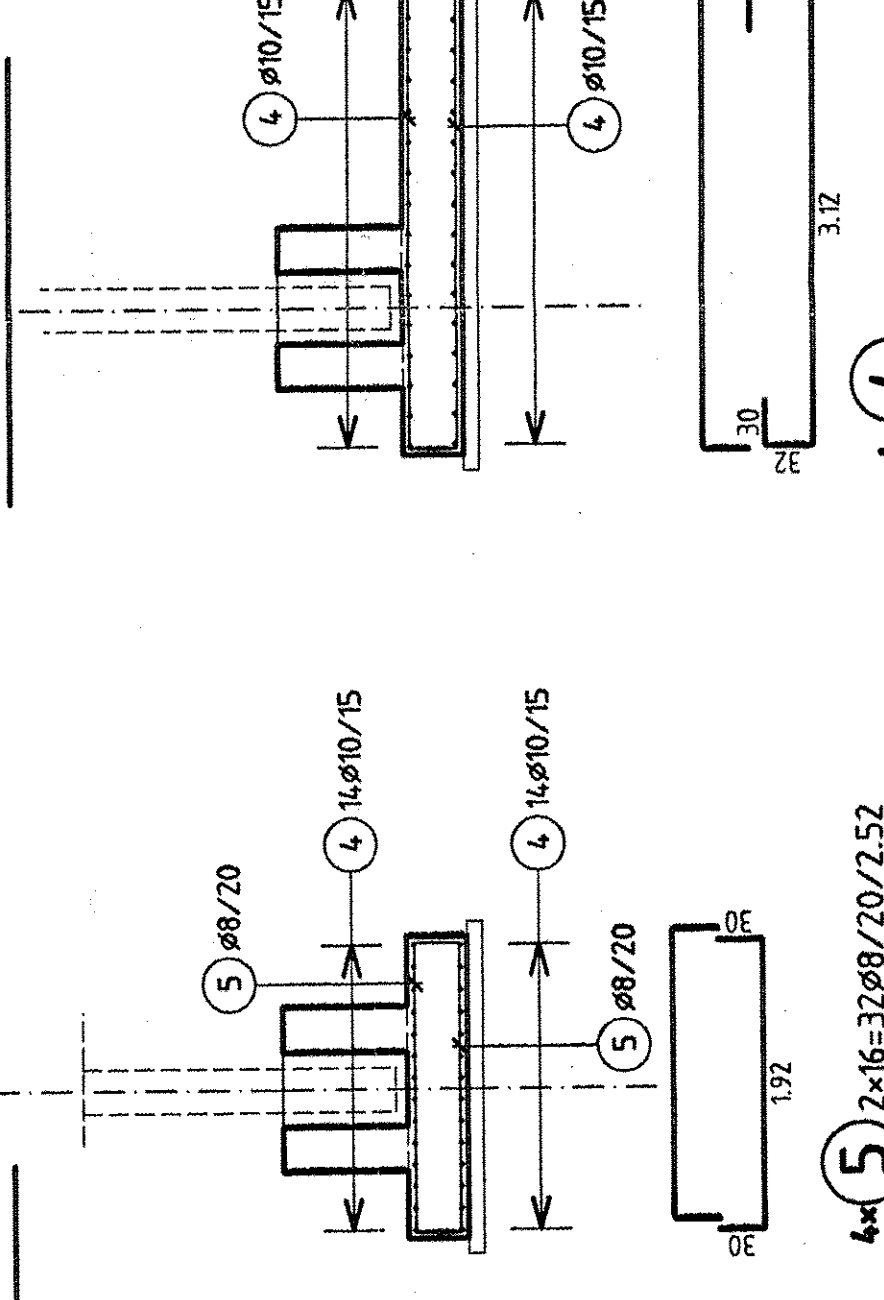
SECTION B-B
FLOOR SLAB (42) AND (43)
SCALE 1/50



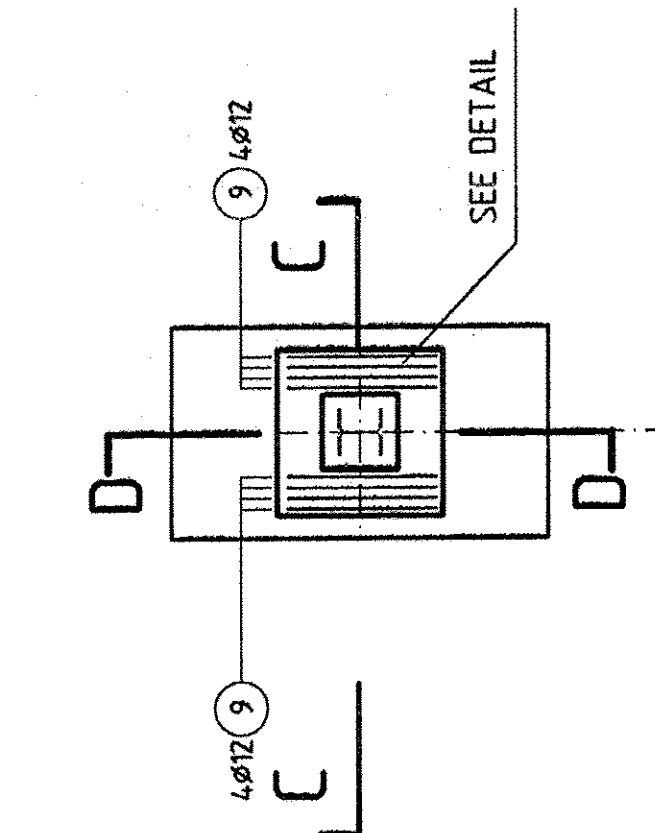
FOUNDATION-TYP <F1> (4x)
TOP VIEW
SCALE 1/50



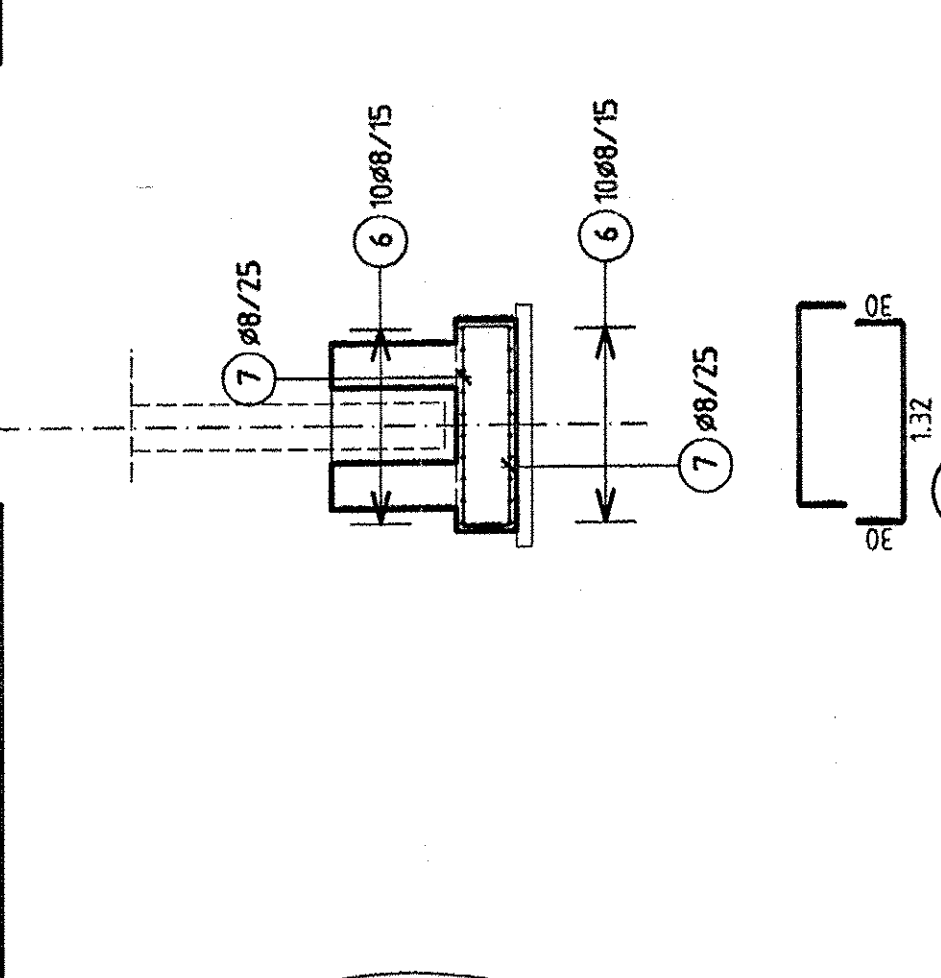
SECTION A-A



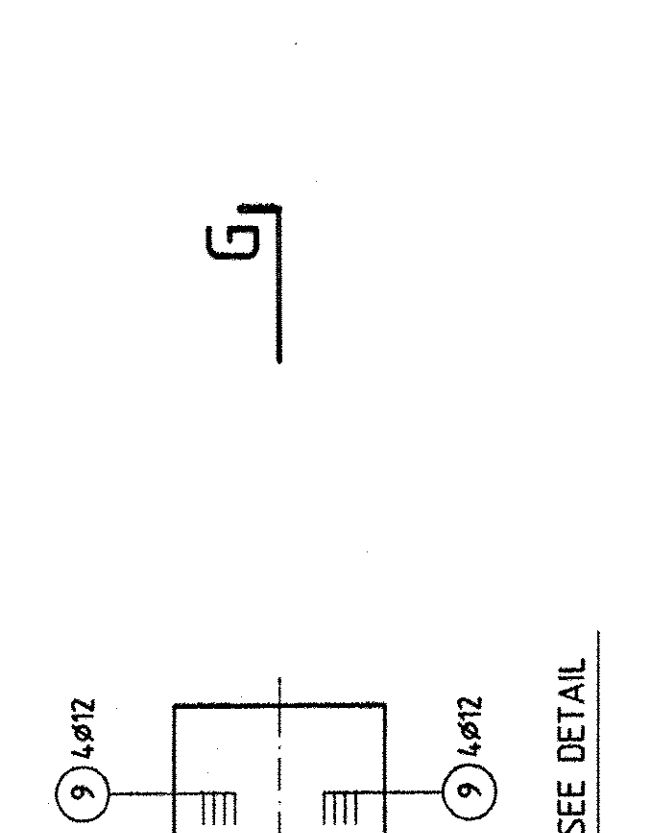
FOUNDATION-TYP <F2> (3x)
TOP VIEW
SCALE 1/50



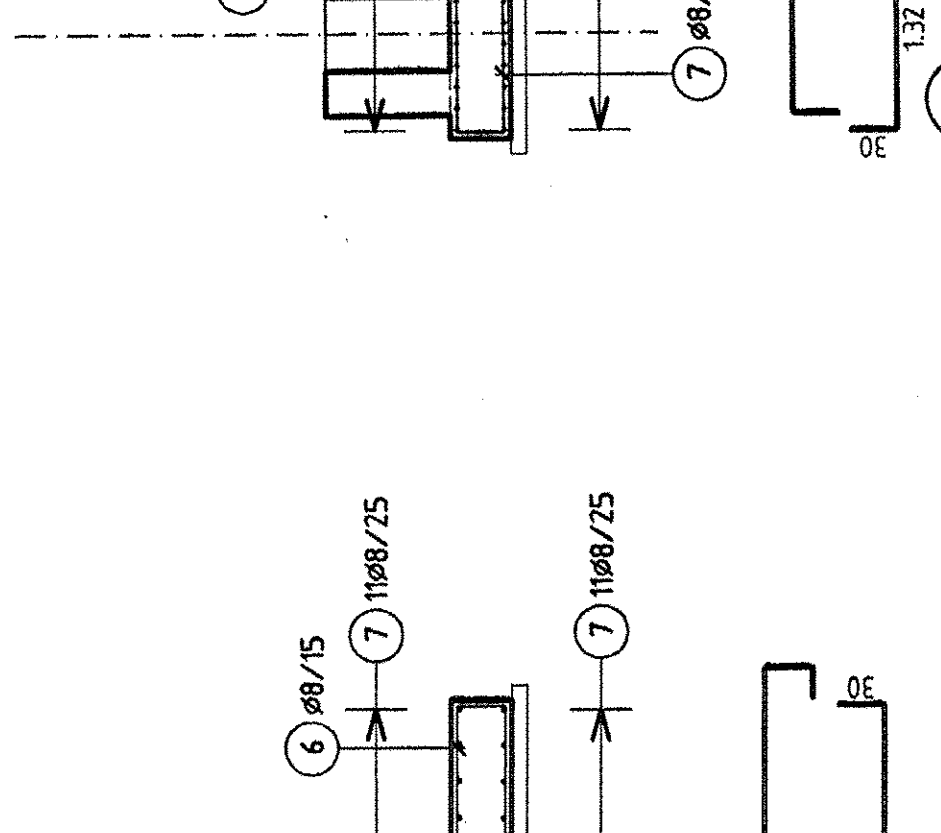
SECTION C-C



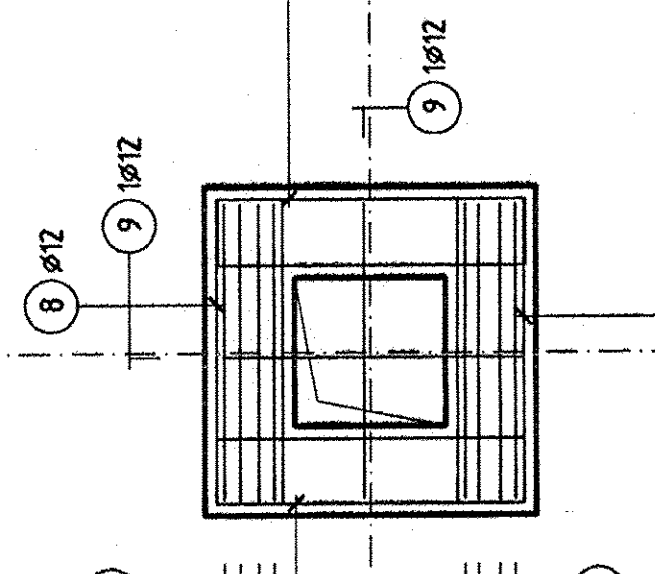
FOUNDATION-TYP <F3> (1x)
TOP VIEW
SCALE 1/50



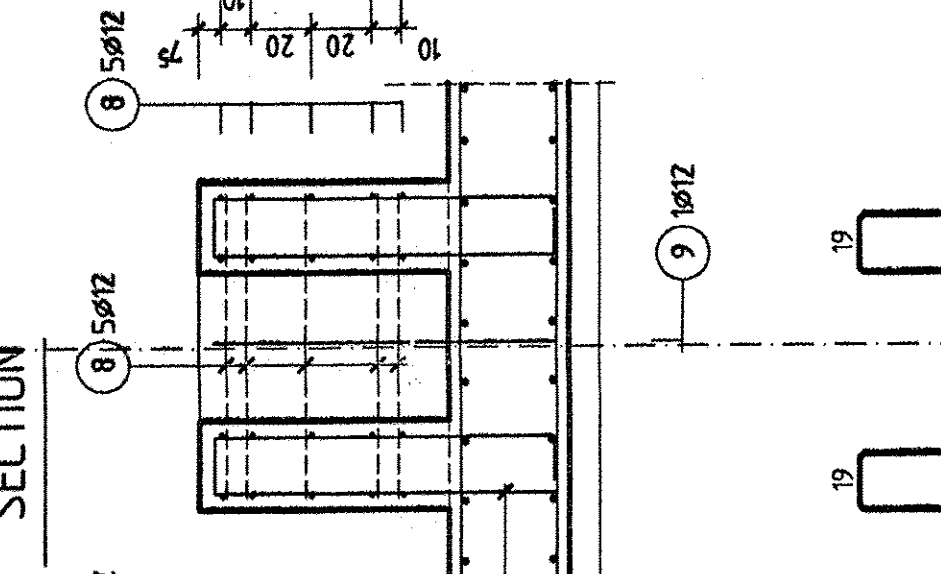
SECTION G-G



FOUNDATION-TYP <F3> (1x)
TOP VIEW
SCALE 1/25

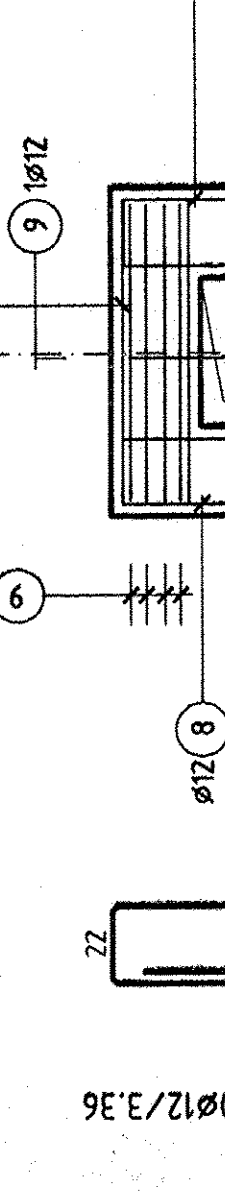
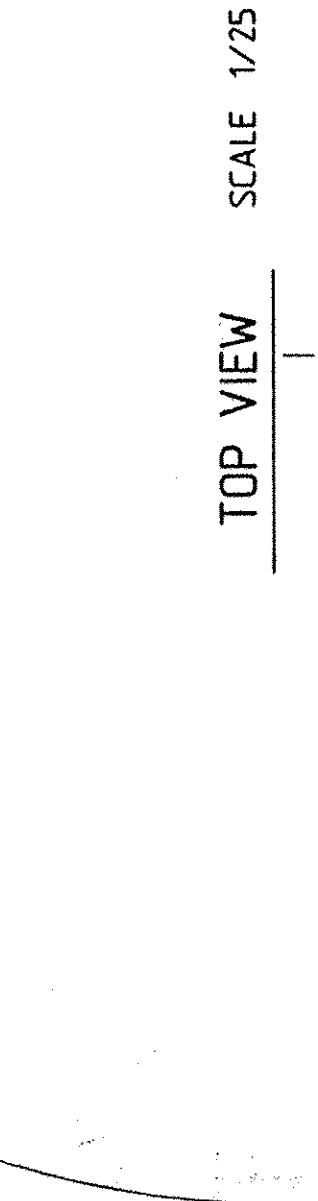


SECTION H-H



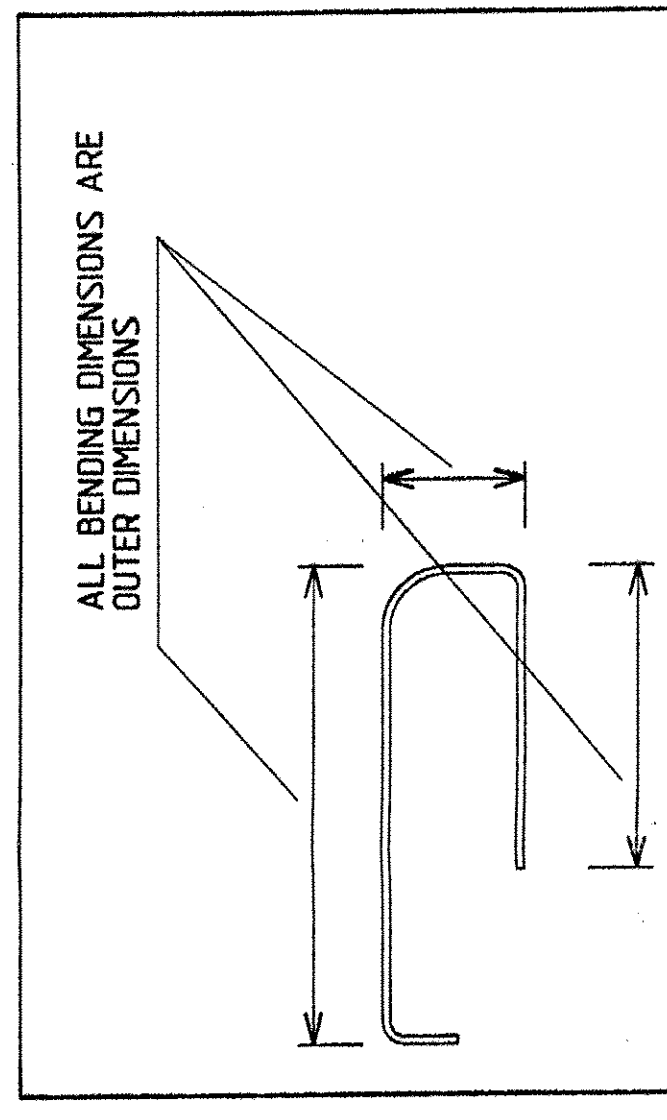
DETAIL BUCKET OF FOUNDATIONS <F1> <F2> <F3>

POSITION OF BARS
SEE TOP VIEW OF FOUNDATION
(8x)



CURING AFTER CASTING OF CONCRETE ACC. TO
THE RESPECTIVE DIRECTIONS.
(FREE SURFACES OF CONCRETE TO BE COVERED AND
MOISTENED DURING TWO WEEKS)

SEE DRAWING-NO: 7574-8
(FOUNDATION PIPE AND CABLE BRIDGE)



Pos.	Ans.	Länge	Bem.
1	50	10	2.50
2	20	10	5.32
3	10	12	1.18
4	112	10	4.04
5	128	8	2.52
6	80	8	3.24
7	88	8	1.92
8	160	12	3.35
9	80	12	5.21
10	24	10	2.30
11	12	10	2.74
12	12	10	2.74
13	12	10	2.74
14	12	10	2.74
15	12	10	2.74
16	12	10	2.74
17	12	10	2.74
18	12	10	2.74
19	12	10	2.74
20	12	10	2.74
21	12	10	2.74
22	12	10	2.74
23	12	10	2.74
24	12	10	2.74
25	12	10	2.74
26	12	10	2.74
27	12	10	2.74
28	12	10	2.74
29	12	10	2.74
30	12	10	2.74
31	12	10	2.74
32	12	10	2.74
33	12	10	2.74
34	12	10	2.74
35	12	10	2.74
36	12	10	2.74
37	12	10	2.74
38	12	10	2.74
39	12	10	2.74
40	12	10	2.74
41	12	10	2.74
42	12	10	2.74
43	12	10	2.74
44	12	10	2.74
45	12	10	2.74
46	12	10	2.74
47	12	10	2.74
48	12	10	2.74
49	12	10	2.74
50	12	10	2.74
51	12	10	2.74
52	12	10	2.74
53	12	10	2.74
54	12	10	2.74
55	12	10	2.74
56	12	10	2.74
57	12	10	2.74
58	12	10	2.74
59	12	10	2.74
60	12	10	2.74
61	12	10	2.74
62	12	10	2.74
63	12	10	2.74
64	12	10	2.74
65	12	10	2.74
66	12	10	2.74
67	12	10	2.74
68	12	10	2.74
69	12	10	2.74
70	12	10	2.74
71	12	10	2.74
72	12	10	2.74
73	12	10	2.74
74	12	10	2.74
75	12	10	2.74
76	12	10	2.74
77	12	10	2.74
78	12	10	2.74
79	12	10	2.74
80	12	10	2.74
81	12	10	2.74
82	12	10	2.74
83	12	10	2.74
84	12	10	2.74
85	12	10	2.74
86	12	10	2.74
87	12	10	2.74
88	12	10	2.74
89	12	10	2.74
90	12	10	2.74
91	12	10	2.74
92	12	10	2.74
93	12	10	2.74
94	12	10	2.74
95	12	10	2.74
96	12	10	2.74
97	12	10	2.74
98	12	10	2.74
99	12	10	2.74
100	12	10	2.74
101	12	10	2.74
102	12	10	2.74
103	12	10	2.74
104	12	10	2.74
105	12	10	2.74
106	12	10	2.74
107	12	10	2.74
108	12	10	2.74
109	12	10	2.74
110	12	10	2.74
111	12	10	2.74
112	12	10	2.74
113	12	10	2.74
114	12	10	2.74
115	12	10	2.74
116	12	10	2.74
117	12	10	2.74
118	12	10	2.74
119	12	10	2.74
120	12	10	2.74
121	12	10	2.74
122	12	10	2.74
123	12	10	2.74
124	12	10	2.74
125	12	10	2.74
126	12	10	2.74
127	12	10	2.74
128	12	10	2.74
129	12	10	2.74
130	12	10	2.74
131	12	10	2.74
132	12	10	2.74
133	12	10	2.74
134	12	10	2.74
135	12	10	2.74
136	12	10	2.74
137	12	10	2.74
138	12	10	2.74
139	12	10	2.74
140	12	10	2.74
141	12	10	2.74
142	12	10	2.74
143	12	10	2.74
144	12	10	2.74
145	12	10	2.74
146	12	10	2.74
147	12	10	2.74
148	12	10	2.74
149	12	10	2.74
150	12	10	2.74
151	12	10	2.74
152	12	10	2.74
153	12	10	2.74
154	12	10	2.74
155	12	10	2.74
156	12	10	2.74
157	12	10	2.74
158	12	10	2.74
159	12	10	2.74
160	12	10	2.74
161	12	10	2.74
162	12	10	2.74
163	12	10	2.74
164	12	10	2.74
165	12	10	2.74
166	12	10	2.74
167	12	10	2.74
168	12	10	2.74
169	12	10	2.74
170	12	10	2.74
171	12	10	2.74
172	12	10	2.74
173	12	10	2.74
174	12	10	2.74
175	12	10	2.74
176	12	10	2.74
177	12	10	2.74
178	12	10	2.74
179	12	10	2.74
180	12	10	2.74
181	12	10	2.74
182	12	10	2.74
183	12	10	2.74
184	12	10	2.74
185	12	10	2.74
186	12	10	2.74
187	12	10	2.74
188	12	10	2.74
189	12	10	2.74
190	12	10	2.74
191	12	10	2.74
192	12	10	2.74
193	12	10	2.74
194	12	10	2.74
195	12	10	2.74
196	12	10	2.74
197	12	10	2.74
198	12	10	2.74
199	12	10	2.74
200	12	10	2.74
201	12	10	2.74
202	12	10	2.74
203	12	10	2.74
204	12	10	2.74
205	12	10	2.74
206	12	10	2.74
207	12	10	2.74
208	12	10	2.74
209	12	10	2.74
210	12	10	2.74
211	12	10	2.74
212	12	10	2.74
213	12	10	2.74
214	12	10	2.74
215	12	10	2.74
216	12	10	2.74
217	12	10	2.74
218	12	10	2.74
219	12	10	2.74
220	12	10	2.74
221	12	10	2.74
222	12	10	2.74
223	12	10	2.74
224	12	10	2.74
225	12	10	2.74
226	12	10	2.74
227	12	10	2.74
228	12	10	2.74
229	12	10	2.74
230	12	10	2.74
231	12	10	2.74
232	12	10	2.74
233	12	10	2.74
234	12	10	2.74
235	12	10	2.74
236	12	10	2.74
237	12	10	2.74
238	12	10	2.74
239	12	10	2.74
240	12	10	2.74
241	12	10	2.74
242	12	10	2.74
243	12	10	2.74
244	12	10	2.74
245	12	10	2.74
246	12	10	2.74
247	12	10	2.74
248	12	10	2.74
249	12	10	2.74
250	12	10	2.74
251	12	10	2.74
252	12	10	2.74
253	12	10	2.74
254	12	10	2.74
255	12	10	2.74
256	12	10	2.74
257	12	10	2.74
258	12	10	2.74
259	12	10	2.74
260	12	10	2.74
261	12	10	2.74
262	12	10	2.74
263	12	10	2.74
264	12	10	2.74
265	12	10	2.74
266	12	10	2.74
267	12	10	2.74
268	12	10	2.74
269	12	10	2.74
270	12	10	2.74
271	12	10	2.74
272	12	10	2.74
273	12	10	2.74
274	12	10	2.74
275	12	10	2.74
276	12	10	2.74
277	12	10	2.74
278	12	10	2.74
279	12	10	2.74
280	12	10	2.74
281	12	10	2.74
282	12	10	2.74
283	12	10	2.74
284	12	10	2.74
285	12	10	2.74
286	12	10	2.74